

HOT & COLD INDEXED PORCELAIN HANDLES



HOT	COLD	DIVERTER	FITS
101210	101280	126410	Am. Standard 7/16 22pt
101350	101420	125710	5/16 Square
102450	102590	104600	European 20pt
147090	147230	125780	Crane Pre-War 12pt
147440	147510	125850	Briggs Republic 8pt
147580	147790	125920	Briggs 18pt
148280	148350	125990	Central, Harden 16pt
105020	105160	105300	Price Pfister 12pt

*For polished brass, add -PB to the end of the part numbers

Indexed Handle shown above attaches with a set screw.

2 DIFFERENT STYLES OF INDEXED HANDLES. CHOOSE WHAT WILL WORK WITH YOUR STEM.



Indexed handle shown below attaches with a handle nut.



HOT	COLD	DIVERTER	FITS
101910	101980	126060	Speakman 20pt
102050	102120	126130	Briggs 8pt
102190	102260	126200	Central, Harden 16pt
102330	102400	126270	Wolverine 15pt
102470	102540	126340	Savoy 15pt
110310	110380	104670	Am. Standard 22pt
110450	110520	104880	5/16 Square



PORCELAIN CROSS HANDLES



**Replacements for Price Pfister
#940-985/986 and #940-980/981**

Large - # 138620

Small - # 138550

Also available:

Large w/ 3/8 12pt Broach - # 138480

Small w/ 3/8 12pt Broach - # 135960

**Replacement Porcelain and Chrome
Plated Brass Buttons for Price Pfister
941-475, # 941-476 and # 941-477**

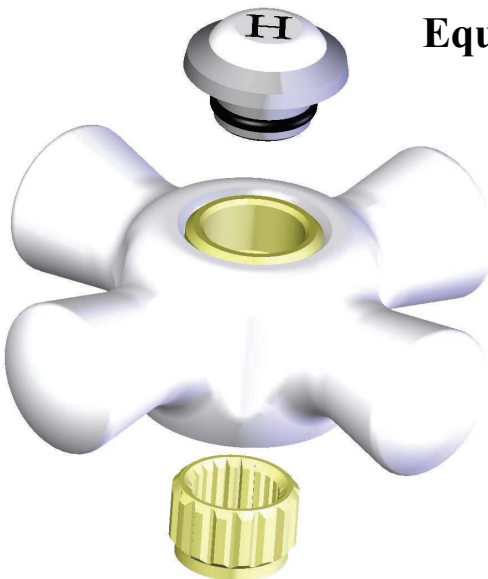
Cold - # 139670

Hot - # 139740

Arrow - # 139810



**Solid brass inserts convert the OEM or Walter
Equivalent Porcelain handles for any of these stems:**



129680 - Adapts to Am. Standard 7/16 22pt

135120 - Adapts to Savoy 15pt

137990 - Adapts to Briggs 18pt

138060 - Adapts to Central, Harden 16pt

138130 - Adapts to Kohler 19pt

138270 - Adapts to Wolverine 15pt

139320 - Adapts to Speakman 20pt

139390 - Adapts to European 20pt

141000 - Adapts to Sayco/Gerber 16pt

141070 - Adapts to Crane Dial-Eze 12pt

141140 - Adapts to Sterling 16pt

141280 - Adapts to Crane/Univ. Rund. 12pt



Use the basic Solid Brass insert to adapt to any of the listed broaches OR turn those Handles into a Classic look with the Old Style Chrome Plated inserts listed on the next page.

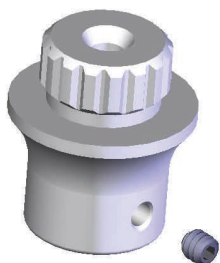
Old Style Chrome Plated Solid Brass Inserts For Porcelain Cross Handles



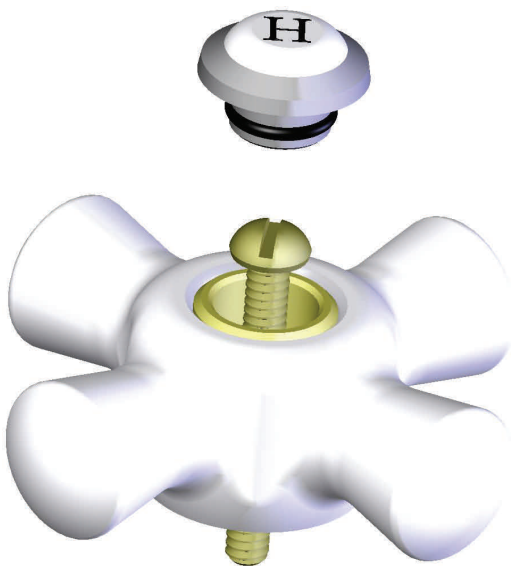
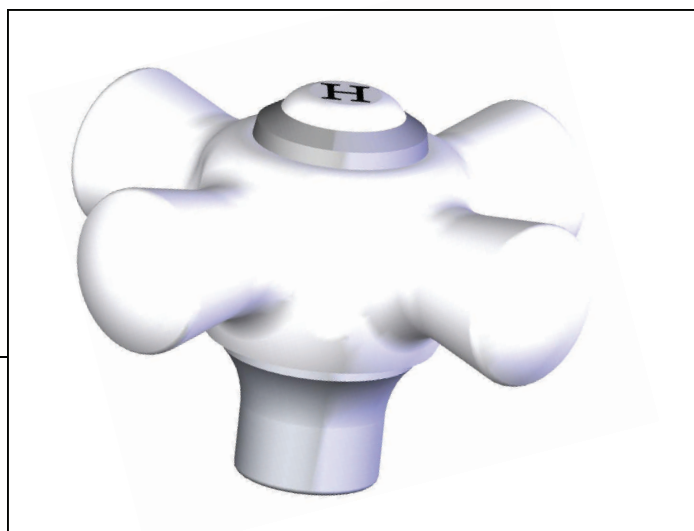
This insert adapts to OEM listed below and attaches **with a set screw.**



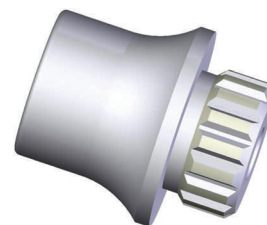
- # 139460 - Adapts to Wolverine 15pt
- # 139530 - Adapts to Central, Harden 16pt
- # 141490 - Adapts to European 20pt
- # 141560 - Adapts to Speakman 20pt
- # 143310 - Adapts to Briggs Republic 8pt
- # 143520 - Adapts to 5/16 Square



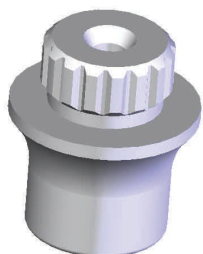
Exploded view with Old Style Insert, supplied with set screw to attach to the stem. A screw is supplied to attach the handle to the insert.



This insert adapts to OEM listed below **without a set screw.**



- # 143590 - Price Pfister 12pt
- # 143660 - Briggs 18pt
- # 143800 - Am. Standard 7/16 22pt
- # 143940 - Central, Harden 16pt
- # 144080 - Savoy 15pt
- # 144430 - Kohler 19pt
- # 144500 - Speakman 20pt
- # 102750 - Chicago Square



Exploded view with Old Style Insert, supplied with appropriate long screw to attach the handle, insert, and stem together.

Prices are for the Inserts (w/ appropriate screws) only. For Handle and Button Prices see page H-2.